

Elsis Cha Cha

Comp. und Arr. Martin Grah / Co-Arr Willy Kotoun / 2020

t = 120

Double Tenor

Intro

2

6

10

A-Thema

14

18

Nochmals A-Thema

22

26

B-Thema (Duett in Moll)

30

34

B-Thema 2. Teil

38

42

Intro 2



46



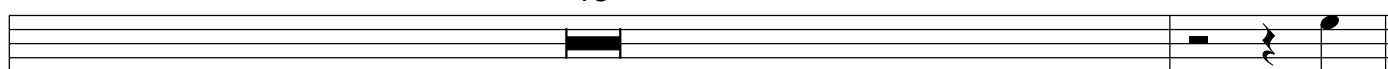
50



53

Solo Interlude

15

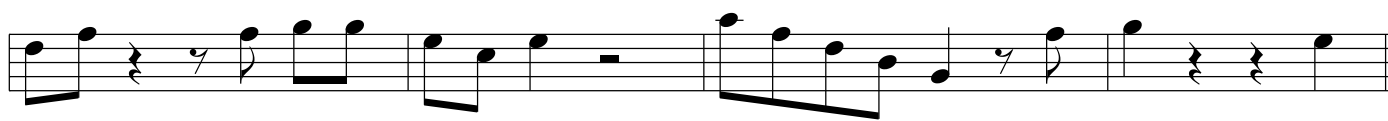


58

Variation A-Thema



74

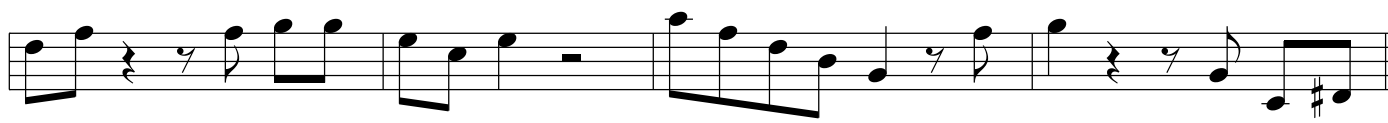


78

Var nochmals



82



86

B-Thema (Duett in Moll)



90



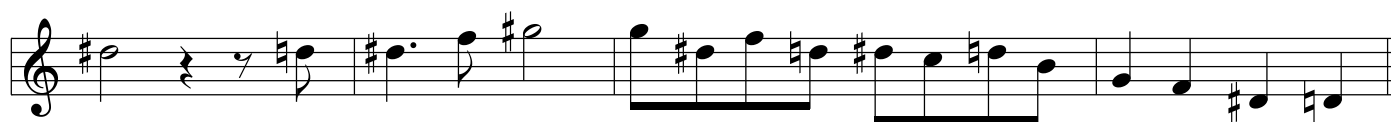
94

B-Thema 2. Teil



98

" Elsis Cha Cha" - Double Tenor - Seite 3



102

Intro 3



106



110



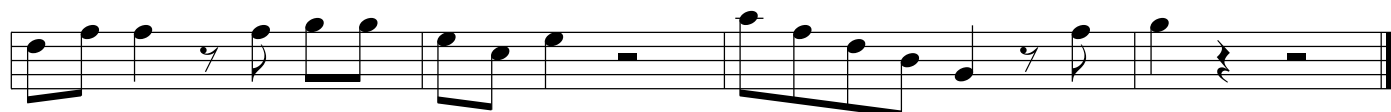
114

Teil von A-Thema



118

Teil von Variation A als Schluss



122